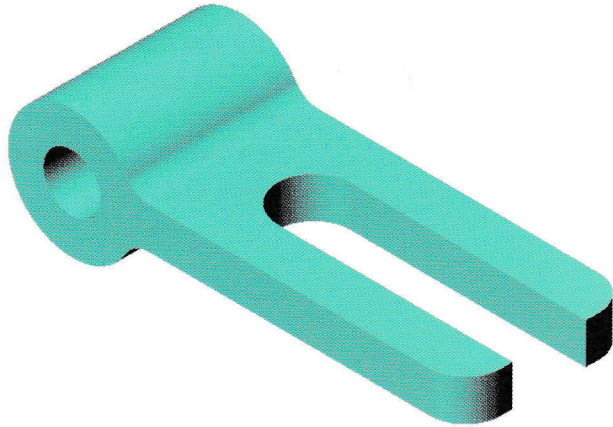


Exercise 16: Slotted Link

Create this part based on shape only. No dimensions are provided. Use relations and equations where applicable to maintain the design intent.



This exercise uses the following skills:

- Sketching.
- Mirroring.
- Cuts through all.

Units: your choice.

Design Intent

The design intent for this part is as follows:

1. Rounded slot is centered on part.
2. Plate thickness is centered on circular end.
3. All fillets are equal radius.
4. All holes are through holes.

Part Design

Use the following graphics together with the given design intent to determine the shape and relationships within the part.

