

# Bridge Timeline



# Aqua Appia

Christopher Midis

# Rialto Bridge



**Length:** 157'

**Location:** Venice, Italy

**Year Opened:** Opened in 1591 for the last time after being rebuilt

**Type:** Arch Bridge

**Material used:** Stone

**Interesting Fact:** Oldest of the four bridges that span the Grand Canal and was rebuilt four times after originally being built in the 12th century.

# Iron Bridge



Location: Shropshire, England

Length: 100'

Year Opened: 1781

Type: Truss

Material Used: Iron

Fact: First Major Bridge Made Using Iron

# Menai Suspension Bridge

A photograph of the Menai Suspension Bridge at dusk. The bridge is illuminated with warm lights, and its reflection is visible in the water below. The sky is a mix of purple, orange, and blue, and the surrounding landscape is dark and wooded.

Location: Anglesey, Wales

Length: 1,368'

Year Opened: 1826

Type: Suspension

Material Used: Stone & Iron Chain

Fact: Iron Chains

© Martin Jones

# Niagara Falls Suspension Bridge



Location: Niagara Falls, NY - Ontario  
Length: 825'  
Year Opened: 1848 - 1896  
Type: Suspension  
Material Used: Stone & Iron Chains  
Fact: Stronger Chains

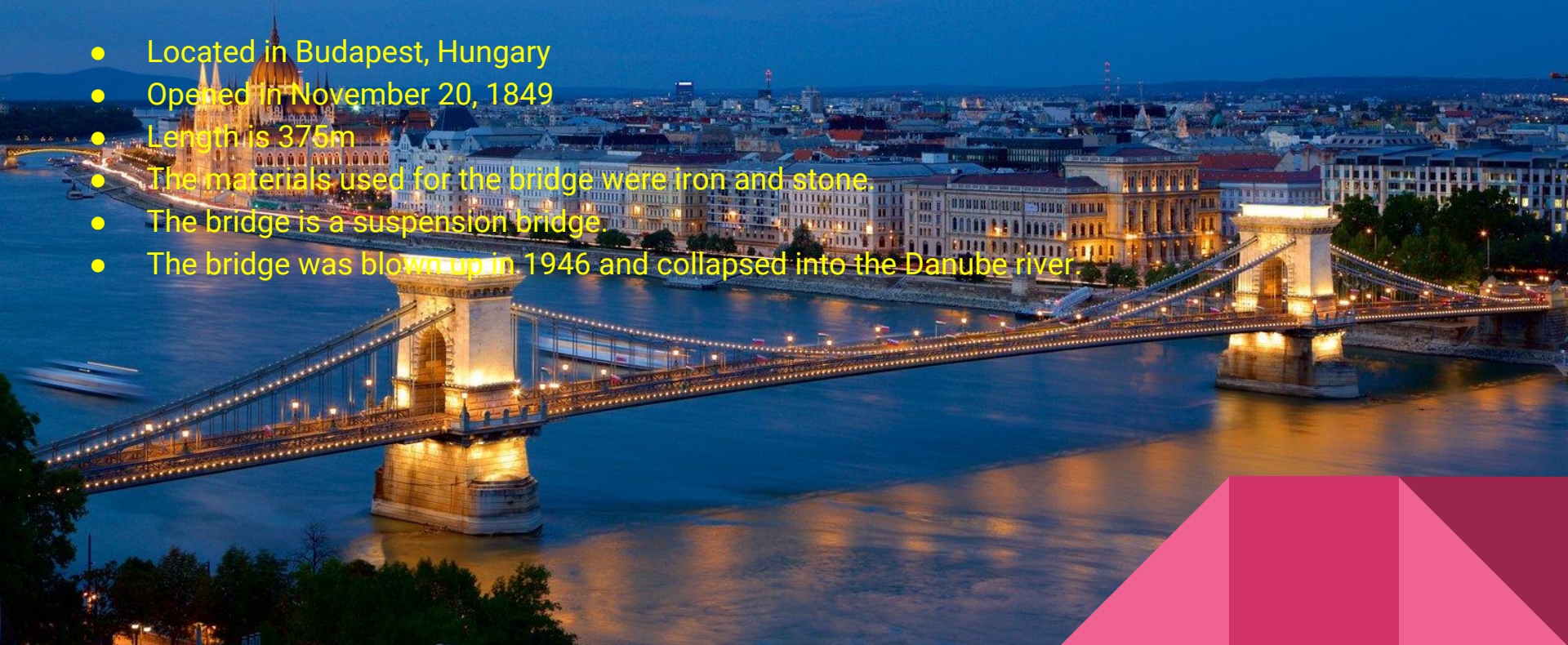
THE RAIL ROAD SUSPENSION BRIDGE.

NEAR NIAGARA FALLS.

Length of Bridge 825 feet. Height above Water 240 Feet.

# Szechenyi Chain Bridge

- Located in Budapest, Hungary
- Opened in November 20, 1849
- Length is 375m
- The materials used for the bridge were iron and stone.
- The bridge is a suspension bridge.
- The bridge was blown up in 1946 and collapsed into the Danube river.



# The Clifton Suspension Bridge

- *Spans along the Avon Gorge in New Zealand.*
- *The bridge opened in 1864.*
- *It has a length of 1,352 feet.*
- *As you can tell by the name, it is a suspension bridge.*
- *The towers are made by stone, the chords by iron rods, and the deck is made from wood.*
- *Sometimes "daredevil" pilots will fly under the bridge.*



# John A. Roebling Suspension Bridge

A nighttime photograph of the John A. Roebling Suspension Bridge. The bridge's massive stone towers are illuminated from below, casting a warm glow. The suspension cables and the bridge deck are also lit with numerous small, bright lights that create a shimmering effect. The bridge spans across a wide river, and the city skyline of Cincinnati is visible in the background, with various buildings lit up. The sky is a deep blue, and the lights from the bridge and city are reflected in the water.

Spans 1,057 feet

Located between Cincinnati, Ohio and Covington, Kentucky

Opened in 1866

Type - suspension bridge

Material used - wood, iron, steel

# Brooklyn Bridge



Location: New York, NY

Length: 5,989'

Year Opened: 1869

Type: Suspension

Material Used: Stone & Steel Cable

Fact: Pilings Deep Underwater

# The Purple People Bridge



Size - 2,670'

Location - Newport Kentucky

Opened - April 1, 1872

Type - Truss Bridge

Material used - Steel / Concrete

A photograph of the Station Road Bridge, a blue-painted metal truss bridge, taken from a perspective on the bridge deck looking towards the sunset. The bridge's structure is composed of interconnected steel beams forming a series of triangles. The sky is a mix of orange, yellow, and blue, with the sun low on the horizon. In the background, a river flows through a lush green forest, and another bridge with a series of arches is visible in the distance. The bridge deck is paved with cobblestones, and there are metal railings on both sides.

Station Road Bridge

128.6 feet

Opened in 1881

Pratt-Whipple Truss Bridge

Wrought-Iron

Brecksville, Ohio

Station Road bridge is the oldest remaining metal truss bridge in the Cuyahoga Valley, and has been in operation for 137 years, only being disassembled and moved to Elmira, New York for restoration, before moving it back to its original spot where it remains to date.

# Tower Bridge

A photograph of the Tower Bridge in London, England, taken during the 'blue hour' of sunset. The bridge's two massive stone towers are illuminated from below, casting a warm glow. The bridge's suspension cables and walkways are painted a vibrant blue. The two bascules (roadway sections) are raised, forming a 'V' shape over the River Thames. In the background, the modern glass skyscraper The Shard is visible against the twilight sky. The water of the river is dark, reflecting the sky's colors.

Length: 801 Feet long

Location: London

Year Opened: 1894

Type: Combination of suspension and  
Bascule

Materials: steel, stone and granite

Interesting Fact: The Bridge is raised over 1000 times a day for ships to cross.

# Ponte Cavour

110 Meters Long

Located in Rome,  
Italy

Opened May 25th 1901

Named after Camillo Benso, conte di Cavour



# *Manhattan Bridge*



6,855 Feet long  
New York city, Manhattan, Brooklyn  
December 9, 1909  
Suspension Bridge  
Made from Steel and Masonry

# Chengyang Bridge

(Sanjiang of Guangxi Province, China)

- 
- The image shows the Chengyang Bridge, a traditional Chinese covered bridge. It features five prominent pavilions with multi-tiered, dark grey tiled roofs and white wooden eaves that curve upwards like bird wings. The pavilions are supported by large, rectangular stone pillars. The bridge spans a river, and the background consists of lush green hills under a clear sky. The overall structure is made of dark wood, with the stone pillars providing a sturdy base.
- 64.4 meters long
  - opened in 1912
  - Covered bridge
  - Wood is the main material used
  - On the bridge itself, there are five tower-like kiosks with 'horns' and eaves which resemble the flapping wings of birds.



# Quebec Bridge

A long cantilever bridge spans across a wide river at night. The bridge's steel truss structure is illuminated with various colored lights, including blue, green, and red. The lights create a vibrant reflection on the water's surface. The sky is dark, and the overall scene is a dramatic night view of the bridge.

987 meters (3238 feet)

Quebec City, Quebec, Canada

Opened December 3rd, 1919

Cantilever Bridge

Riveted Steel Truss

Longest Cantilever bridge in the world, collapsed in 1911, and 1916, killing 88 workers, carries 3 highway lanes, a rail line, and a pedestrian walkway

# Royal Gorge Bridge

- This bridge is 1,270 feet long
- Located in Cañon City, Colorado
- The bridge was opened in 1929
- The bridge is a suspension bridge
- Bridge is made of steel and timber
- This bridge was once the tallest bridge in the world, but is still the tallest bridge in the U.S. at 955 feet tall



# Birchenough Bridge

Length: 1,241 ft.

Location: Chipinge, Zimbabwe

Opened: Dec. 20, 1935

Type: Truss Bridge

Materials: Steel, Concrete

Fact: It's on the 20 cent coin



# Golden Gate Bridge



Location: San Francisco  
Length: 8,981'  
Year Opened: 1937  
Type: Suspension  
Material Used: Steel  
Fact: New Material Steel

# Bixby Creek Bridge



Length - 714'

Location - California

Opened - 1932

Type - Arch

Material - concrete

Fact - Has the longest spanning concrete arch on the California highway system at 320'

The arch of Deer  
Creek Bridge is  
(23.77) m or  
about 75 ft.

# Bridge Slideshow Deer Creek Bridge

Deer Creek Bridge  
is located in  
Pierce County,  
WA and was built  
in 1939

Deer Creek Bridge has a series of transeverse beams between spandrel walls and an elevated concrete beam that holds the sidewalk curb stones. The bridge was also built on a 20° curve with a strait span on tangent.

# New Tacoma Narrows Bridge



- 5,979 ft in length
- Located on State Route 16 between Tacoma and Gig Harbor, Washington
- Opened on Oct. 14, 1950
- Suspension bridge with some trusses under it for support
- Made out of steel plates and concrete
- The original bridge was rebuilt to be the westbound bridge in 1950 and then in 2007 the eastbound bridge opened making this a twin suspension bridge, either side has different design as shown in the picture

# Hampton Roads Bridge

An aerial photograph of the Hampton Roads Bridge-Tunnel, a long transportation structure crossing the Chesapeake Bay. The structure consists of a long bridge section that transitions into a tunnel section. The water is a deep blue, and the sky is a pale blue. The bridge and tunnel are dark grey or black, contrasting with the water.

3.5 miles

Norfolk Virginia

1957

Trestle/Tunnel

Concrete, Steel

Goes Underwater





# Crescent City Connection Bridges

Length- 13,428 feet overall, longest span 1,575 feet

Location- New Orleans, Louisiana

Year Opened- 1958

Type- Truss cantilever bridge

Material Used- Steel

Interesting Fact- 5th longest cantilever bridge by main span at 1,575 feet



Location: Staten Island, NY

Length: 13,700'

Year Opened: 1959

Type: Suspension

Material Used: Steel

Fact: Replacement to Bridge That Collapsed Due to Wind.

# Verrazano-Narrows Bridge

# Glen Canyon Dam Bridge

- Length: 1,271 feet (387 m)
- Location: Colorado River, Arizona
- Year opened: 1966
- Type: Arch Bridge
- Material used: Concrete
- Interesting fact: 5th tallest bridge in the United States (700 ft)

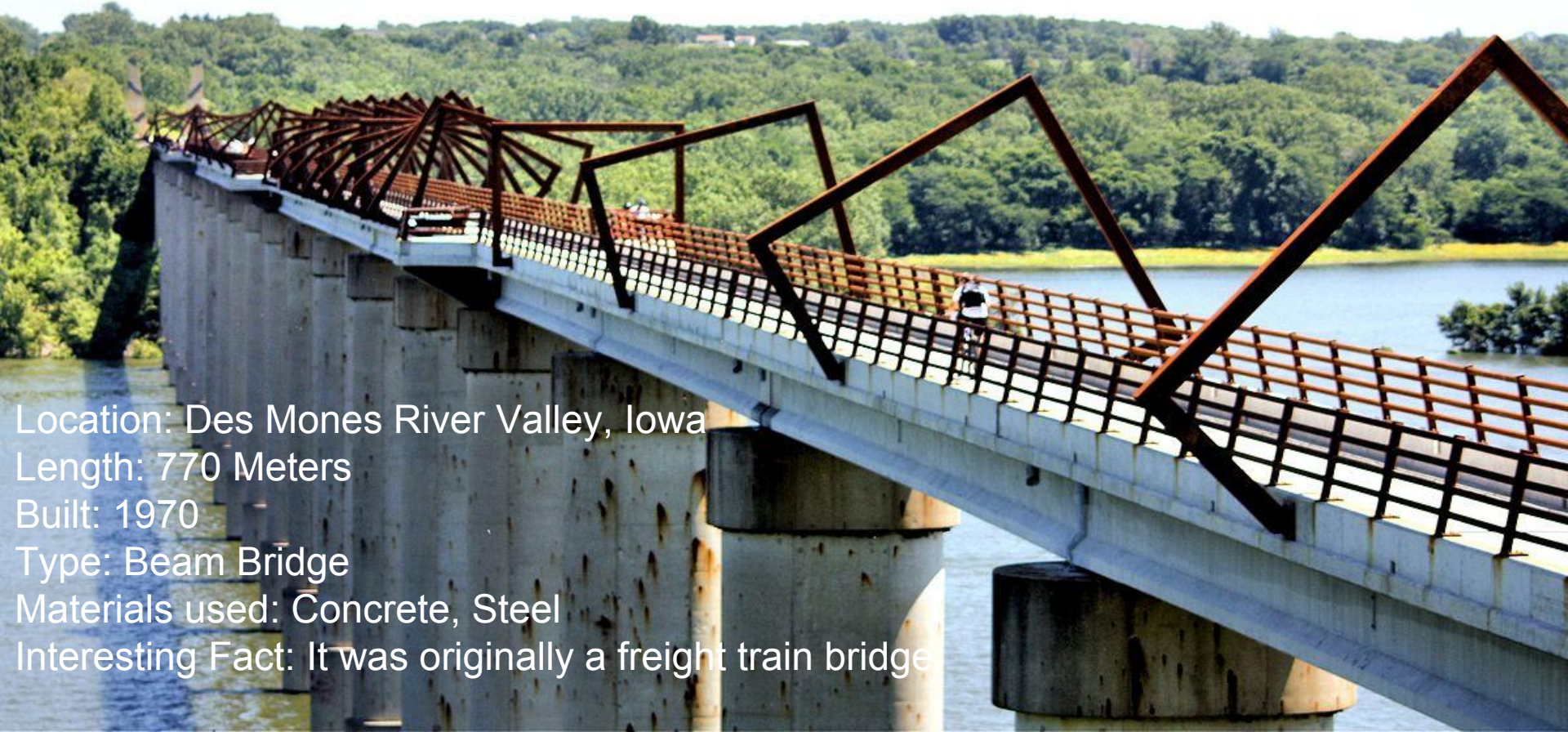


# Lake Pontchartrain Causeway



- 23.88 Miles long
- Southbound span opened in 1956, Northbound span opened in 1969
- Located in New Orleans, Louisiana
- Bridge Type: Trestle
- Made of concrete and steel
- Interesting Facts: Longest Bridge in the World and for 8 miles of the bridge, you can not see land in any direction

# High Trestle Trail Bridge



Location: Des Moines River Valley, Iowa

Length: 770 Meters

Built: 1970

Type: Beam Bridge

Materials used: Concrete, Steel

Interesting Fact: It was originally a freight train bridge

# Bosphorus Bridge



- 5,118 feet long, 110 feet wide
- It is located in Istanbul, Turkey
- Opened in October 1973
- It is a Suspension Bridge
- The Bosphorus Bridge is made out of steel
- Interesting Fact- There is an LED lighting system installed, the multi colored lights glow at night making this bridge pretty unique



# New River Gorge Bridge

Length: 3030 ft

Location: Fayetteville, West Virginia

Opened in 1977

876 ft Tall



# Manchac Swamp Bridge

- 22.8 miles/120,440 feet long
- 49 feet high
- 312 feet wide
- Spans over Manchac Swamp in St. John the Baptist Parish/Tangipahoa Parish, Louisiana
- Opened in 1979
- Trestle bridge/Viaduct
- Concrete
- One of the longest bridges over water in the world.
- Holds one third of interstate highway 55 in Louisiana.
- The swamp below is said to be haunted by a rougarou (Cajun werewolf) and voodoo princess.



# Ganter Bridge



Length: 2,224 feet

Location: Switzerland

Year Opened: 1980

Type: Cable stayed and prestressed cantilever girder bridge.

Material: Reinforced Concrete

Fact: The Ganter Bridge is the largest spanning bridge in Switzerland.

# ERASMUSBRUG

Anthony Minatel

**Type: Cable Stayed**

**Location: Rotterdam, Netherlands**

**Opened: 1996**

**Length: 2,631 ft.**

**Longest Span: 932 ft.**

**Tower Height: 456 ft.**

**Materials: Steel, Concrete**

**The southernmost span (far right) is the largest and heaviest drawbridge in Western Europe, at 256 ft long.**

**The bridge is nicknamed “The Swan” due to the appearance of its tower**

4518 feet long  
Located in Hong Kong  
Finished May 22, 1997  
Suspension bridge  
Made of Concrete, iron, & steel

# Tsing Ma Bridge



By: Ben Bazan

# Akashi Kaikyo Bridge

A wide-angle photograph of the Akashi Kaikyo Bridge, a suspension bridge spanning a large body of water. The bridge is illuminated by the warm, golden light of a sunset or sunrise, with the sky transitioning from a pale blue to a bright yellow. The bridge's two main towers are visible, with numerous suspension cables supporting the deck. In the foreground, several large, smooth, dark rocks are scattered along the shoreline. The water is calm, reflecting the light from the sky. In the distance, a few small boats and a larger ship are visible on the water, and the silhouettes of mountains are visible on the horizon.

Location: Kobe-Naruto, Japan

Length: 12,831'

Year Opened: 1998

Type: Suspension

Material Used: Steel

Fact: Longest Span in the World

# Pearl Bridge

3,911  
Meters/  
12,831 feet!

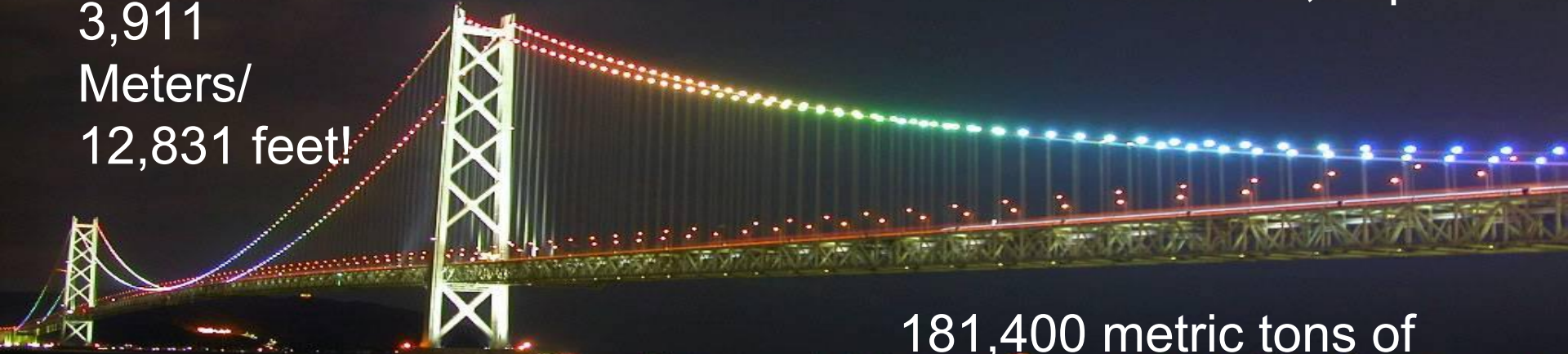
Opened: April 5th, 1998

In Kobe-Naruto, Japan

Suspension  
Bridge

181,400 metric tons of  
steel and 1.42 million  
cubic meters of concrete  
was used

Interesting fact: about 24,901 cars pass over it every day



# Kurushima-Kaikyō Bridge(

- 13,173' Ft.
- Imabari, Japan
- May 1,1999
- Suspension Bridge
- Connects island of Oshima to main part of Shikoku
- Made of Steel, Iron



# Slauerhoffbrug Bridge

The “Flying Drawbridge”

Built to be quickly and efficiently raised and lowered due to the heavy boat traffic in the canal

Located in  
Leeuwarden,  
Netherlands.

49' Feet Long  
&  
49' Feet Wide



Opened in 2000

Built from  
Iron and Steel

Tail Bridge

# Millennium Bridge



1066' long  
In London  
Opened in 2000  
Suspension bridge  
Concrete, steel, and aluminum  
It was opened in 2 different  
times 2000, and 2002





Øresund Bridge

7,845 metres (25,738 ft)

Øresund Strait

Opened 2000

Cable-Stayed Bridge

Concrete and Steel

# Øresund Bridge

An aerial photograph of the Øresund Bridge, a long cable-stayed bridge spanning the Øresund strait between Denmark and Sweden. The bridge features a series of tall, white, A-frame pylons supporting the deck with numerous cables. The water is a deep blue, and the sky is clear. The bridge extends far into the distance, curving slightly to the right.

**Length: 25,738'**

**Location: Malmö, Sweden**

**Year Opened: 2000**

**Type: Cable-Stay**

**Materials: Steel and Reinforced  
Concrete**

**Turns into a tunnel**



Da Vinci Golden horn Bridge  
108 meters  
Between Oslo and Stockholm, Norway  
Opened 2001  
Arch bridge  
Glulam Beams (type of wood)  
Originally conceived by Leonardo De  
Vinci in 1501, was never built because it  
was too advanced to be built at the  
time.





# Zakim Bridge

Boston

Opened March 30th, 2003

Length: 1430 ft    Bridge Type: Cable-stayed Bridge    Materials: Steel and Concrete  
The two upside-y-shaped towers, are meant to look like the Bunker Hill Monument and, the cables extending from the two towers form massive triangles, to match the appearance of the ships' sails.

# Rio–Antirio Bridge

Name: Rio–Antirio bridge

Location : Greece, Antirrio, Rio

Length : 9449 feet

Year Opened : August 7, 2004

Type : Cable-stayed

Materials used : reinforced concrete,  
steel, polymer, stainless steel

Interesting fact : it's the world's longest  
multi-span cable-stayed bridge



# MILLAU VIADUCT

## MILLAU VIADUCT

**MILES CONTE**

**Length: 8,071'**

**Location: Millau, France**

**Opened: December 16, 2004**

**Type: Cable Stay**

**Material Used: Towers: Reinforced concrete with some prestressing**

**Deck: Steel box girder**

**Cables: Steel**

**Interesting Fact: It is the tallest bridge in the world (With a structure height of 343 metres).**



# The Sunniberg Bridge

The image shows the Sunniberg Bridge, a cable-stayed bridge with multiple concrete piers and steel cables, spanning a valley. The bridge is made of concrete and steel. The background features mountains and a forested valley. The sky is clear and blue.

- 1,726 Feet long
- Klosters, Switzerland
- Opened 2005
- Cable Stay Bridge
- Concrete and steel



# Sutong Yangtze River Bridge



Length

26,923 ft; 8,206 m

Year Opened:

2008

Type

Cable-Stayed Bridge

Material Used

Steel

Location

Nantong China

Interesting Fact: The Sutong Yangtze River Bridge is the world's 2nd longest Cable-Stayed Bridge and sets the world record for having the largest width on a Cable-Stayed Bridge at 116 ft in length.

# Seafarers Bridge

- ❑ LENGTH: 246 FEET
- ❑ LOCATION: YARRA, MELBOURNE, AUSTRALIA
- ❑ YEAR OPENED: 2008
- ❑ TYPE: CABLE STAY
- ❑ MATERIALS: STEEL



# Sidu River Bridge



This Bridge is 1222 metres long and spans 900 metres.  
located in Hubie Yesanguanzhen Above the Sidu river.  
opened November 15, 2009.

Suspension Bridge

built with steel, wire, concrete, and cable.

Interesting fact is, that this bridge is known for how difficult it was to build they couldn't use a helicopter or boat they had to use a rocket to string the cable

# Infinity Bridge



**Length: 787 ft**

**Location: Stockton-on-Tees, UK**

**Opened: 2009**

**Type: Arch Bridge**

**Materials: Steel and Concrete**

**Interesting fact:**

**At night, the walkway across the Infinity Bridge is lit by white and blue LED lighting. The colors change as people walk across the bridge.**

# Helix Bridge

A nighttime photograph of the Helix Bridge in Singapore. The bridge is illuminated with bright blue lights, creating a glowing effect. It features a double helix design with two walkways that spiral around each other. The bridge spans across a body of water, and the city skyline is visible in the background. People are seen walking on the bridge, and the water reflects the lights.

Location: Esplanade Mall,  
Singapore

Length: 919 feet

Opened in 2010

Type: Double Helix Pedestrian  
Bridge

Materials used: Stainless steel

# Sheikh Zayed Bridge



**Length:** 2,762 feet

**Location:** Abu Dhabi

**Year Opened:** November 25th, 2010

**Type:** Deck Arch Bridge

**Material Used:** Concrete and Steel

**Interesting Fact:** Inspired by the shape of sand dunes and is said to be the most intricate bridge ever constructed

# Danyang–Kunshan Grand Bridge

An aerial photograph of the Danyang-Kunshan Grand Bridge, a long viaduct spanning a large body of water. The bridge is a long, straight concrete and steel structure supported by numerous piers. It features two large, white, A-frame pylons in the middle section. The water is a deep blue, and the sky is clear. The bridge curves slightly to the right in the distance.

Length: 540,682 feet (102.4 miles)

Location: Shanghai, China

Year Opened: 2011

Type: Viaduct

Material Used: Concrete & Steel

# Nhật Tân Bridge

Length-3,700 metres  
Location-Hanoi, Vietnam  
Year Opened-2015  
Type-Cable-Stayed

Materials Used- Reinforced concrete  
and braided steel wires

It was designed and built to become a  
new icon of the capital. The five towers  
symbolize the five ancient gates of  
Hanoi.



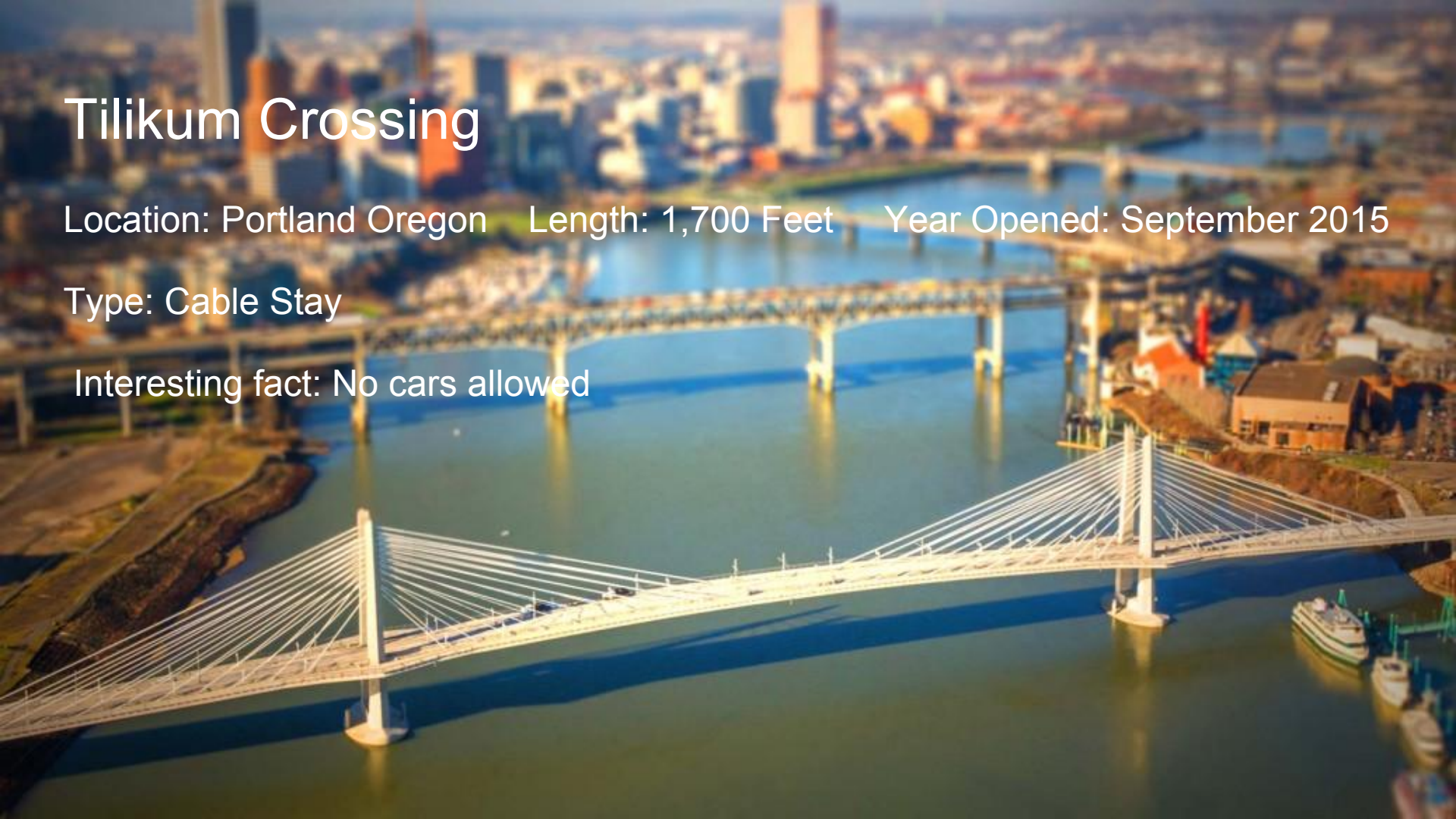


# Tilikum Crossing

Location: Portland Oregon   Length: 1,700 Feet   Year Opened: September 2015

Type: Cable Stay

Interesting fact: No cars allowed



# Laguna Garzón Bridge

An aerial photograph of the Laguna Garzón Bridge in Uruguay. The bridge is a long, curved girder bridge that winds through a lagoon. It features a unique design with a wide, raised concrete curb on the outer edge of the curve. The bridge is supported by numerous vertical piers. The water is calm, reflecting the warm colors of the sunset sky. In the background, a dark shoreline with some buildings and a beach is visible under a sky with soft, orange and pink hues.

Length- 202 meters or 663 feet

Location- Located in Uruguay and stretches between Rocha and Maldonado

Year Opened- December 22, 2015

Interesting Fact- This was designed and built to slow driver down when crossing the lagoon.

Type- Girder Bridge

Materials Used- Steel and Concrete

# Evergreen Point Floating Bridge

An aerial photograph of the Evergreen Point Floating Bridge in Seattle, Washington. The bridge is a long, multi-lane structure supported by numerous floating pontoons, extending from the foreground towards the city skyline in the background. The water is a deep blue, and the city buildings are visible on the distant shore under a clear sky.

**Length: 7,710 feet**

**Location: Seattle, Washington**

**Year opened: 2016**

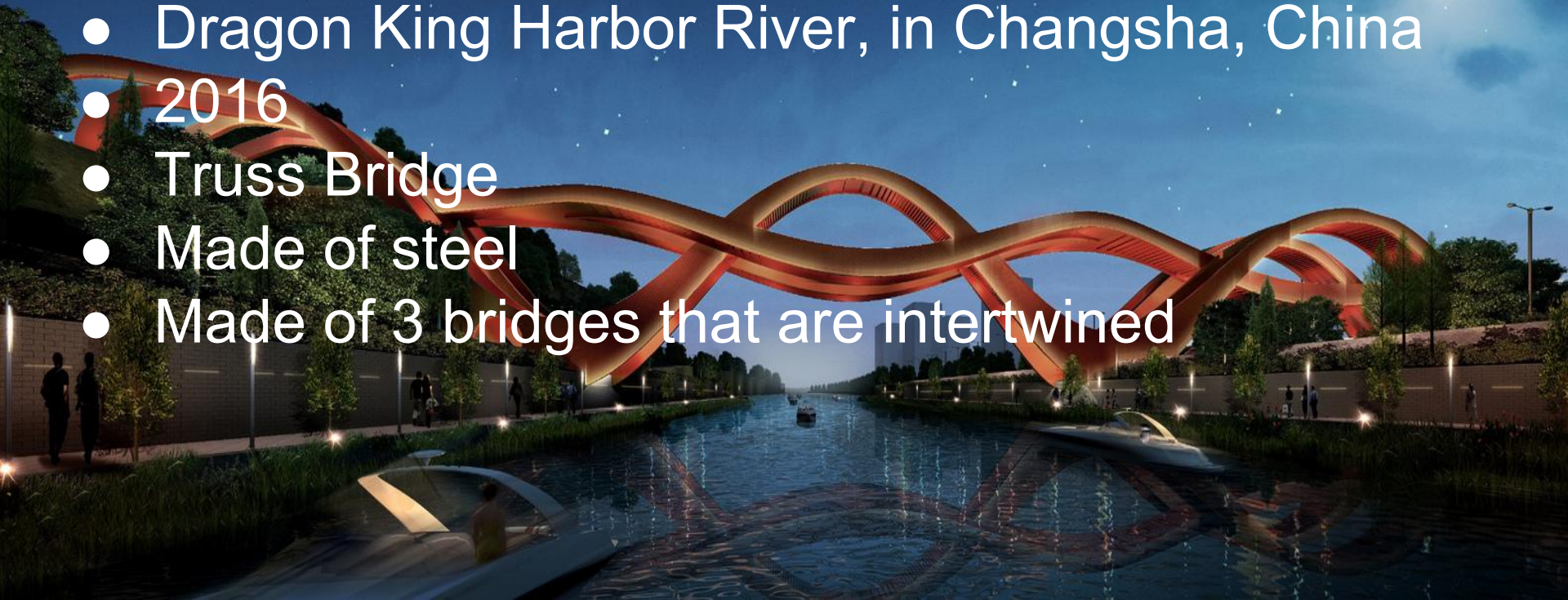
**Type: Pontoon Bridge**

**Material used: Precast Concrete**

**Fact: Longest floating bridge in the world.**

# Lucky Knot Bridge

- 185 meters long
- Dragon King Harbor River, in Changsha, China
- 2016
- Truss Bridge
- Made of steel
- Made of 3 bridges that are intertwined





# Zhangjiajie Glass Bridge

Length: 430 Meters (1411 Feet)

Location: Zhangjiajie, China

Year Opened: 2016

Type: Suspension

Material Used: Steel

Interesting Fact:

When it opened it was the longest and tallest glass bottomed bridge in the world.



# Langkawi Sky Bridge

A photograph of the Langkawi Sky Bridge, a curved pedestrian cable-stayed bridge. The bridge is made of steel and has a glass floor. It is supported by a tall, blue, lattice-structured tower. The bridge spans across a deep valley with lush green mountains and dense forest. The sky is blue with some white clouds. Several people can be seen walking on the bridge.

## **Length:**

The total length was 125 meters and 1.8 meters wide

## **Location:**

Located in Malaysia at the peak of Mt. Mat Cincang.

## **Year opened:**

It was opened to public on 27th February 2005.

## **Type:**

Curved pedestrian cable-stayed bridge

## **Material used:**

Steel to make it shine as a sun between mountains, wood and glass for the floor to create a height impact stronger.