

## Exercise 19: Idler Arm

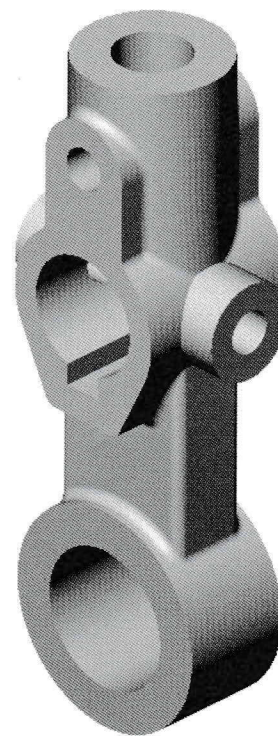
Create this part using the dimensions provided. Use relations and equations where applicable to maintain the design intent. Give careful thought to the best location for the origin.

This part can be constructed using only the Top, Front and Right reference planes.

This lab uses the following skills:

- Sketching.
- Mid Plane and Through All extrusions
- Filleting.

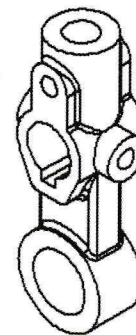
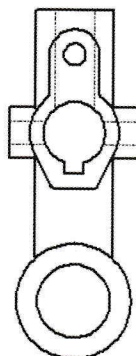
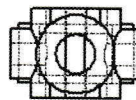
Units: **inches**



### Design Intent

The design intent for this part is as follows:

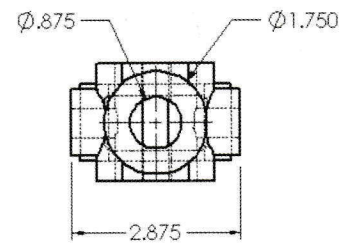
1. The part is symmetrical.
2. Front holes on centerline.
3. All fillets and rounds are R 0.125" unless noted.
4. Center holes in Front and Right share a common centerpoint.



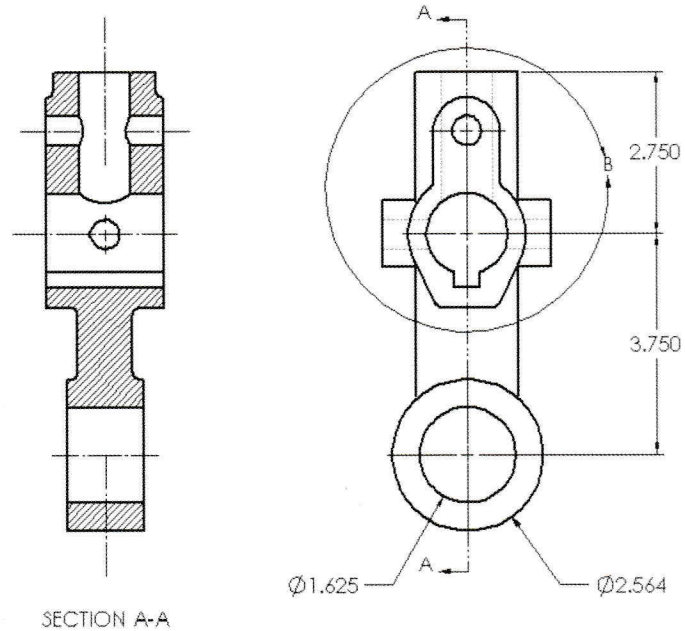
## Dimensioned Views

Use the following graphics with the design intent to create the part.

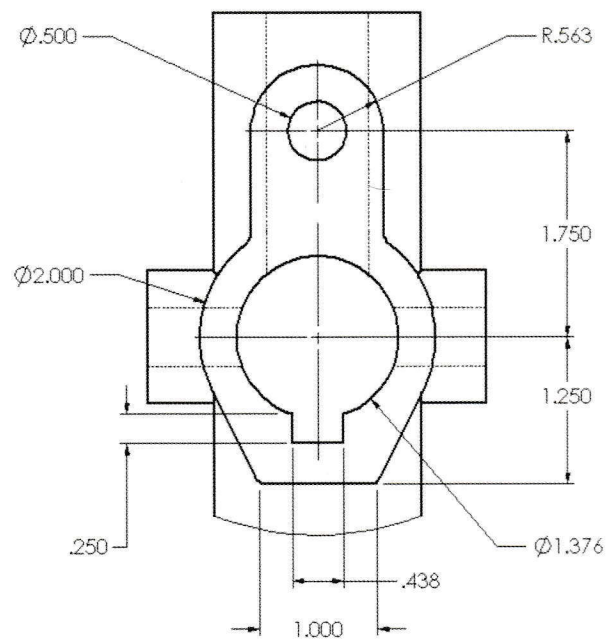
Top view of part.



Front view and section view of the part. Detail B follows.

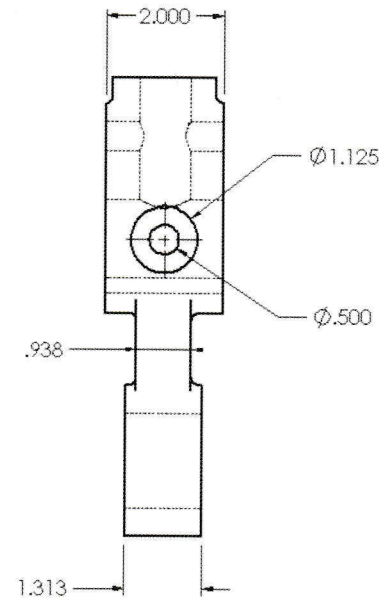


Detail B from the Front view.

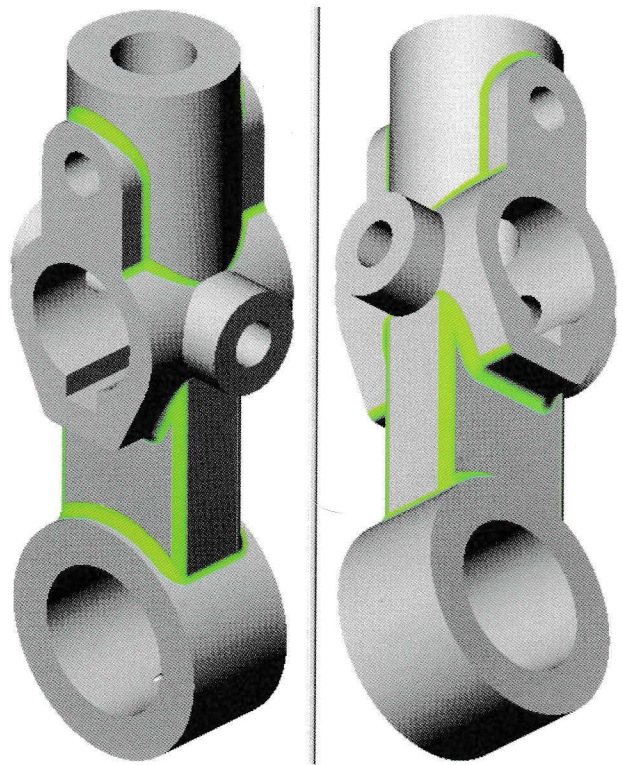


DETAIL B  
SCALE 2:1

Right view of the part.



Two views of the part with the fillets shown highlighted.



9 Save and close the part.