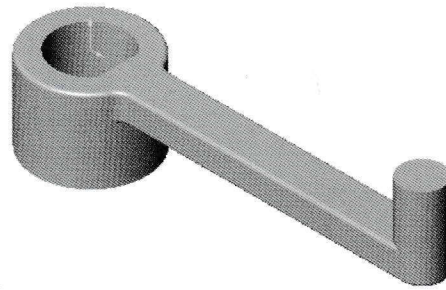


## Exercise 12: Contours

Create this part using the information and sketch provided. Extrude profiles to create the part.

This exercise uses the following skills:

- Using Sketch Contours.
- Fillets and Rounds.

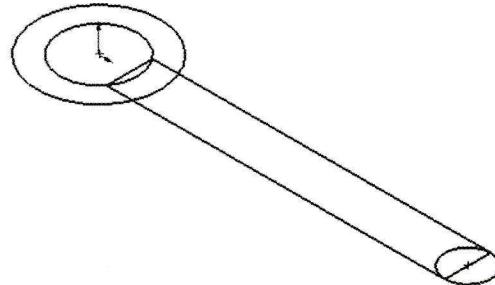


### Procedure

Open an existing part.

**1 Open the part Contours.**

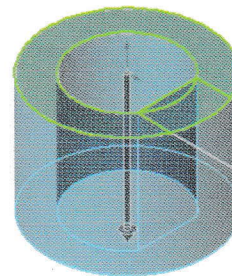
The part consists of a single sketch.



**2 First feature.**

Using the **Contour Select Tool**, select the proper geometry and extrude.

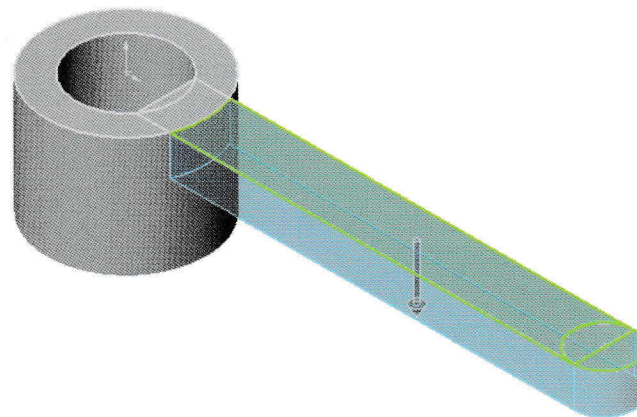
**Depth = 0.75".**



**3 Boss feature.**

Using the *same* sketch, select contours and extrude.

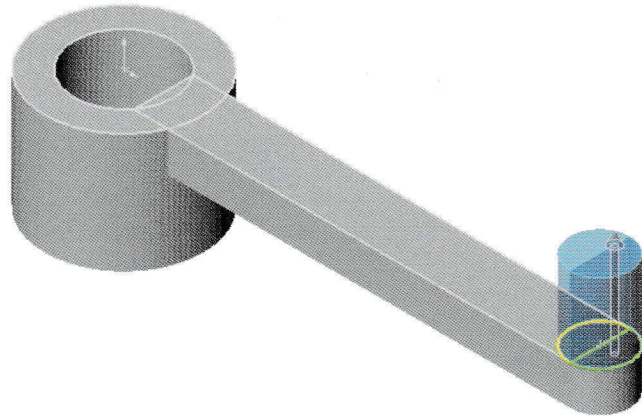
**Depth = 0.25".**



**4 Cylindrical boss.**

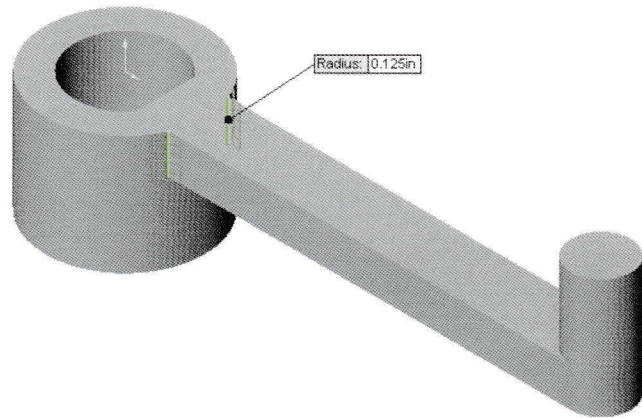
Using the *same* sketch, select contours and extrude.

**Depth = 0.5"**



**5 Fillets.**

Add fillets of radius **1/8"**.



**6 Rounds.**

Add rounds of radius **1/32"**.

**7 Save and close the part.**

