



Building A Home

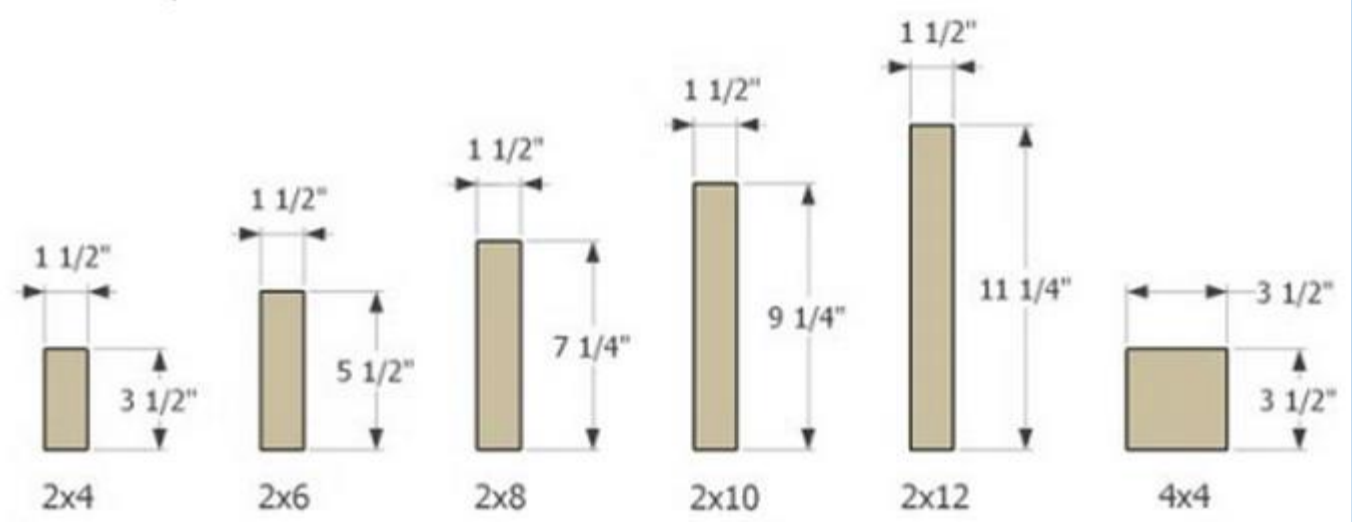
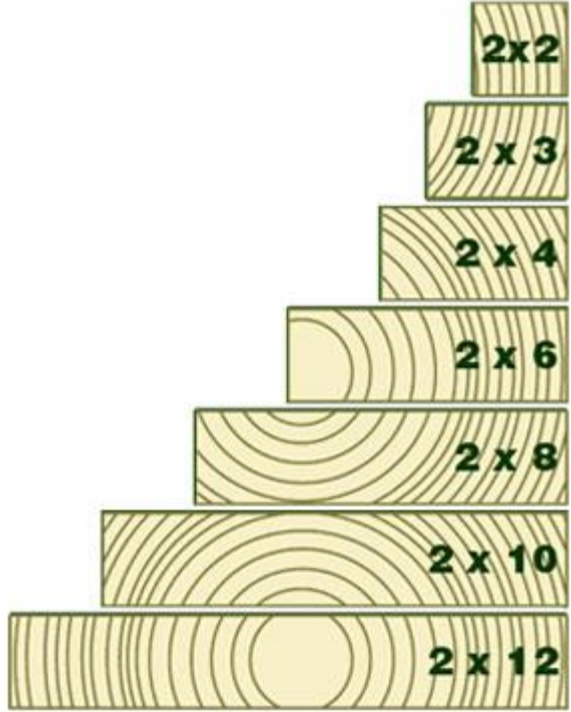
BBHHS Tech Ed

Mr. Goubeaux

Model Cabin Project



Nominal Lumber/Sizing



Footer

- Lowest point of the house that anchors the foundation to the ground.
- Similar to an abutment in a bridge.



Foundation

- Base of the home
- 3 Types
 - Basement (common to us)
 - Block
 - Poured Concrete
 - Crawlspace
 - Slab



Main Beam



Foundation



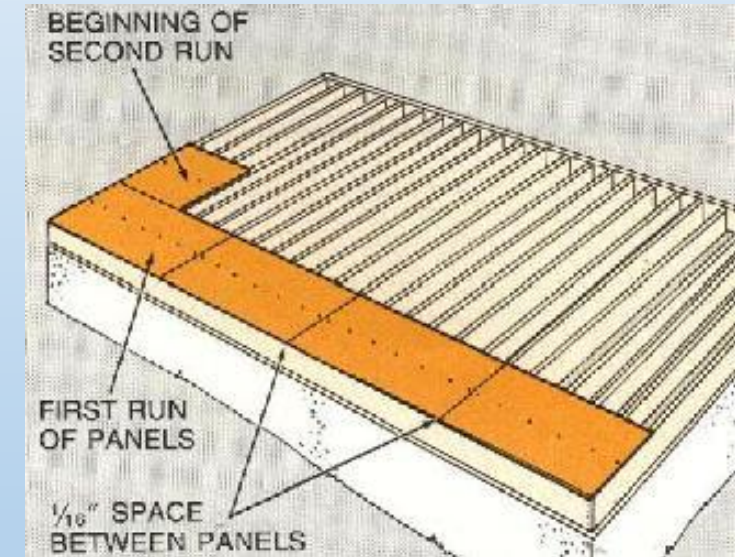
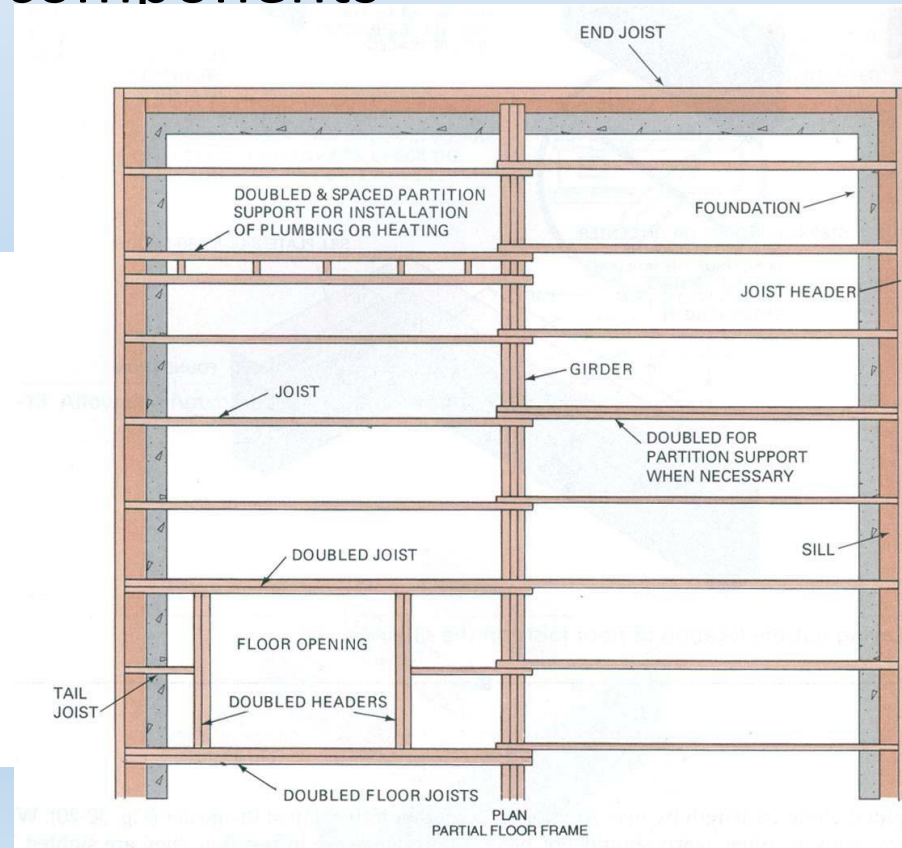
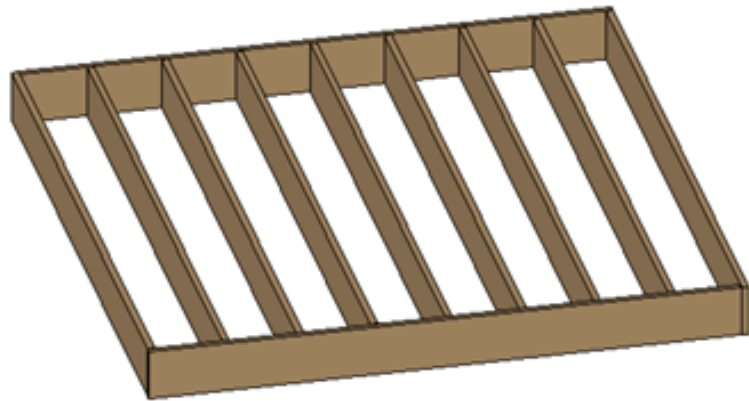
Sill Plate

- Connects the sub floor to the foundation
- Normally 2x8 pressure treated lumber
- Layer of insulation between plate and foundation



Sub Floor

- Horizontal structure that creates the floor of each level
- Made up of 2 major components
 - Joist
 - Plywood

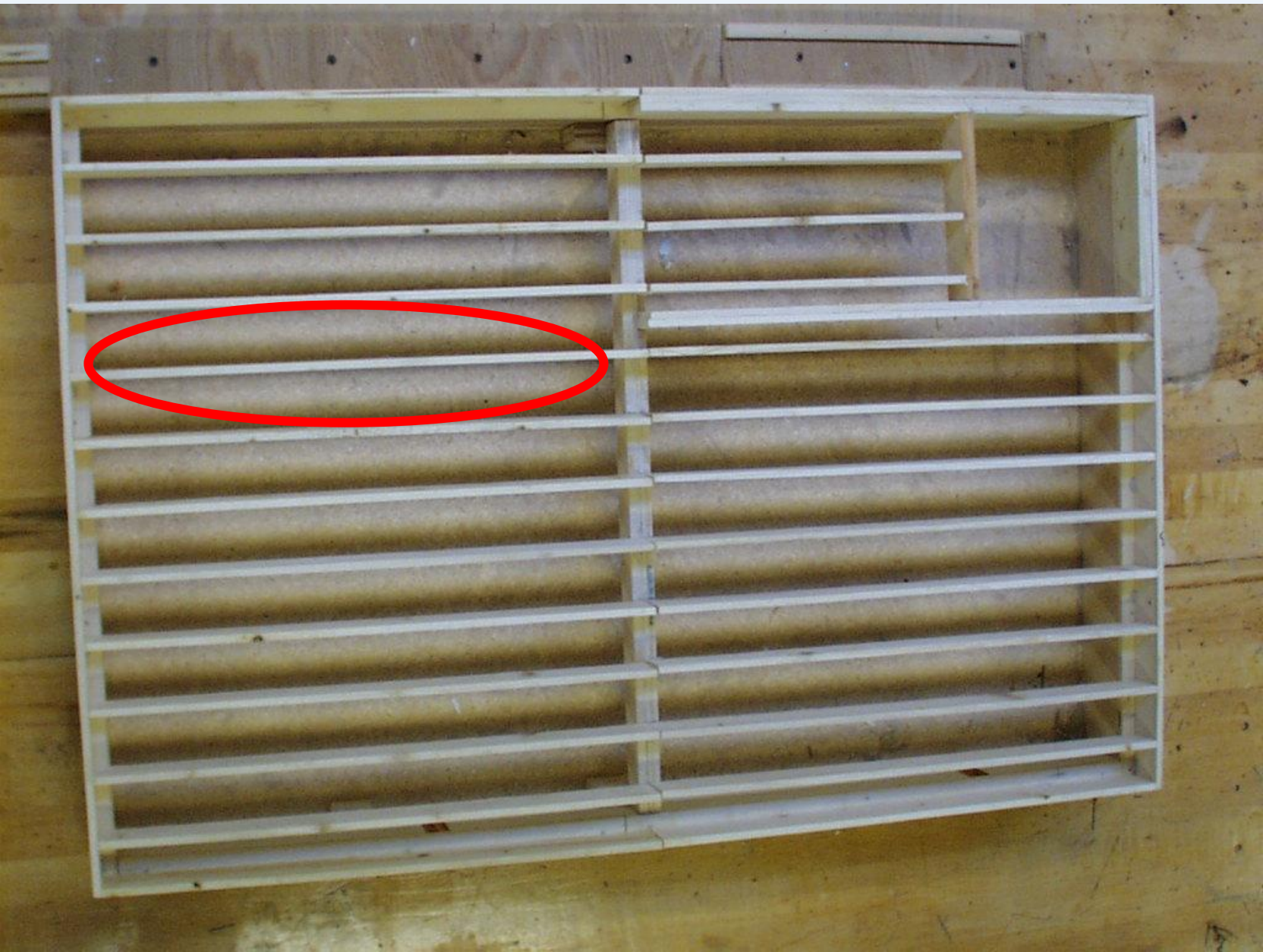


Sub Floor Materials

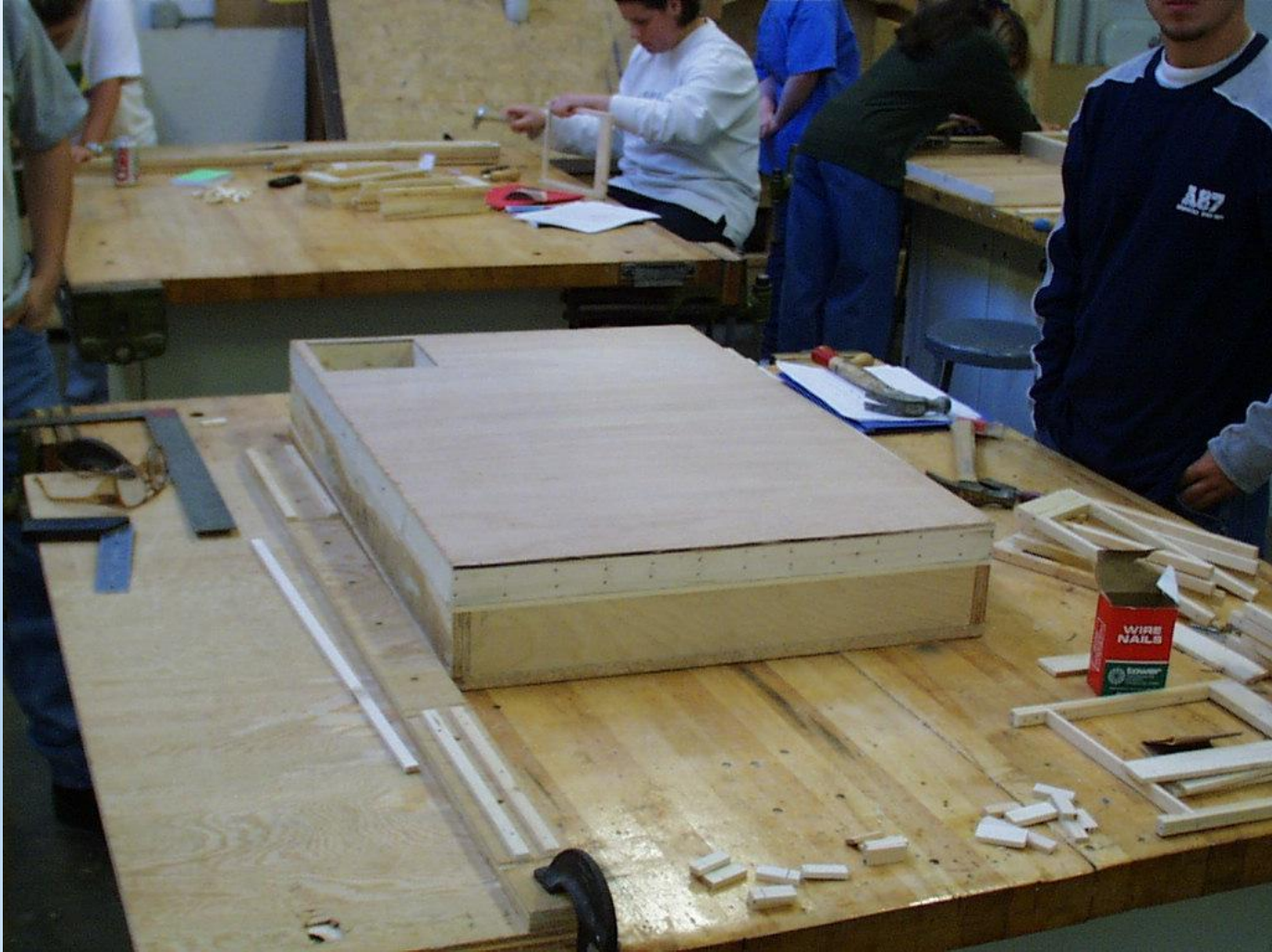
- Joist
 - 2x12 Lumber
 - Manufactured Wood I Beams
- Flooring
 - Plywood
 - Particle Board



Joist



Subfloor on Foundation

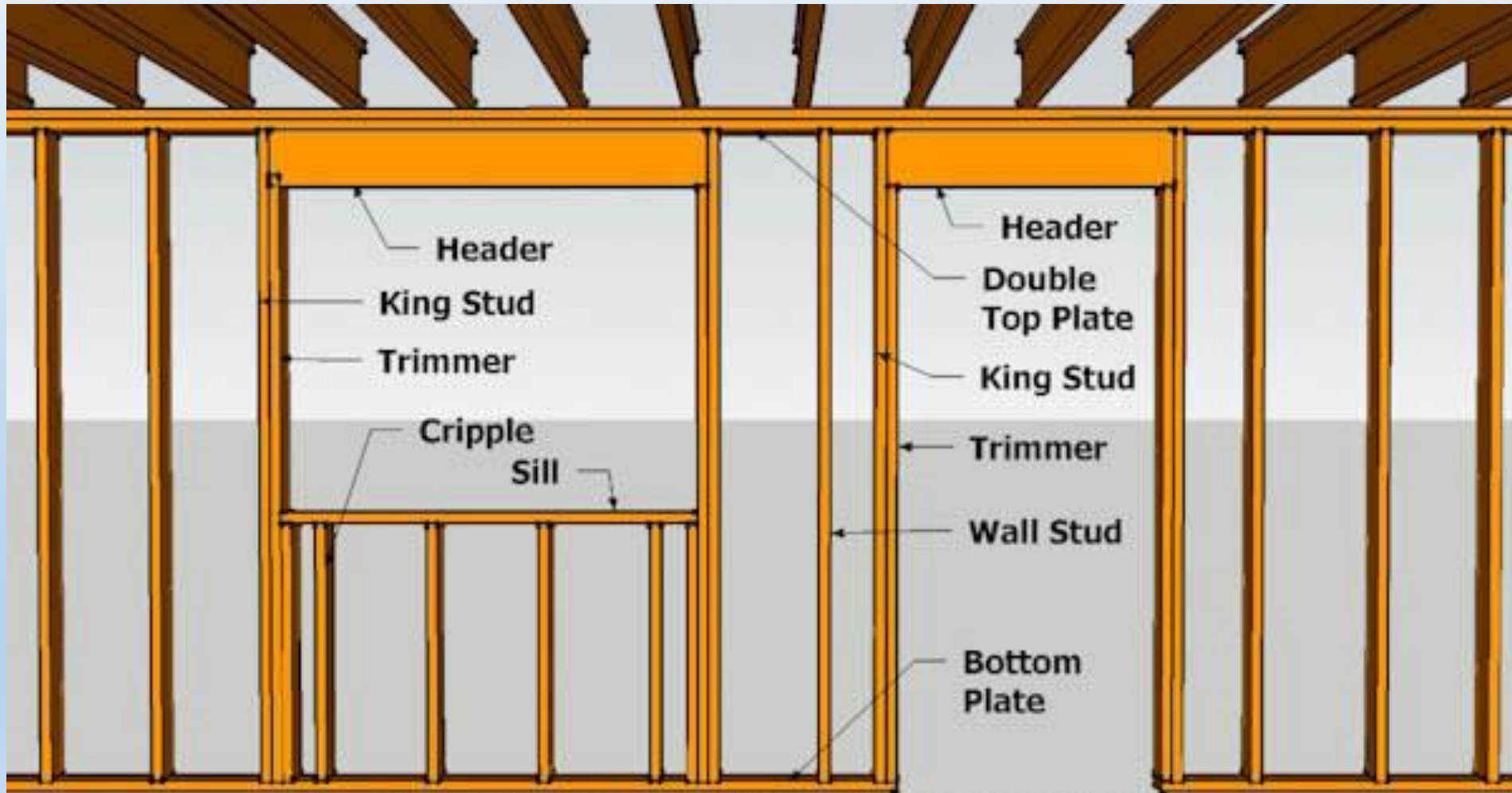


Wall Framing

- Most homes in our area are framed using 2x4 Lumber



Wall Framing Parts



Wall Section



Beginning of Framing



Interior Walls Going Up



Model Cabin Directions

- Outside dimensions of cabin 16' x 24'
- Use 1/8 scale when building
- Draw full size on Revit
- Must be at least two openings (door or window) on all four sides of the cabin
- Must have opening in floor for stairs to basement
- Must include at least 1 floor built but 2 floor plans in Revit
- Cabin must include at least 1 small bathroom, 1 bedroom, living area, and a small kitchen.
- Must dimension from outside corners to center of openings

Floor Plan

